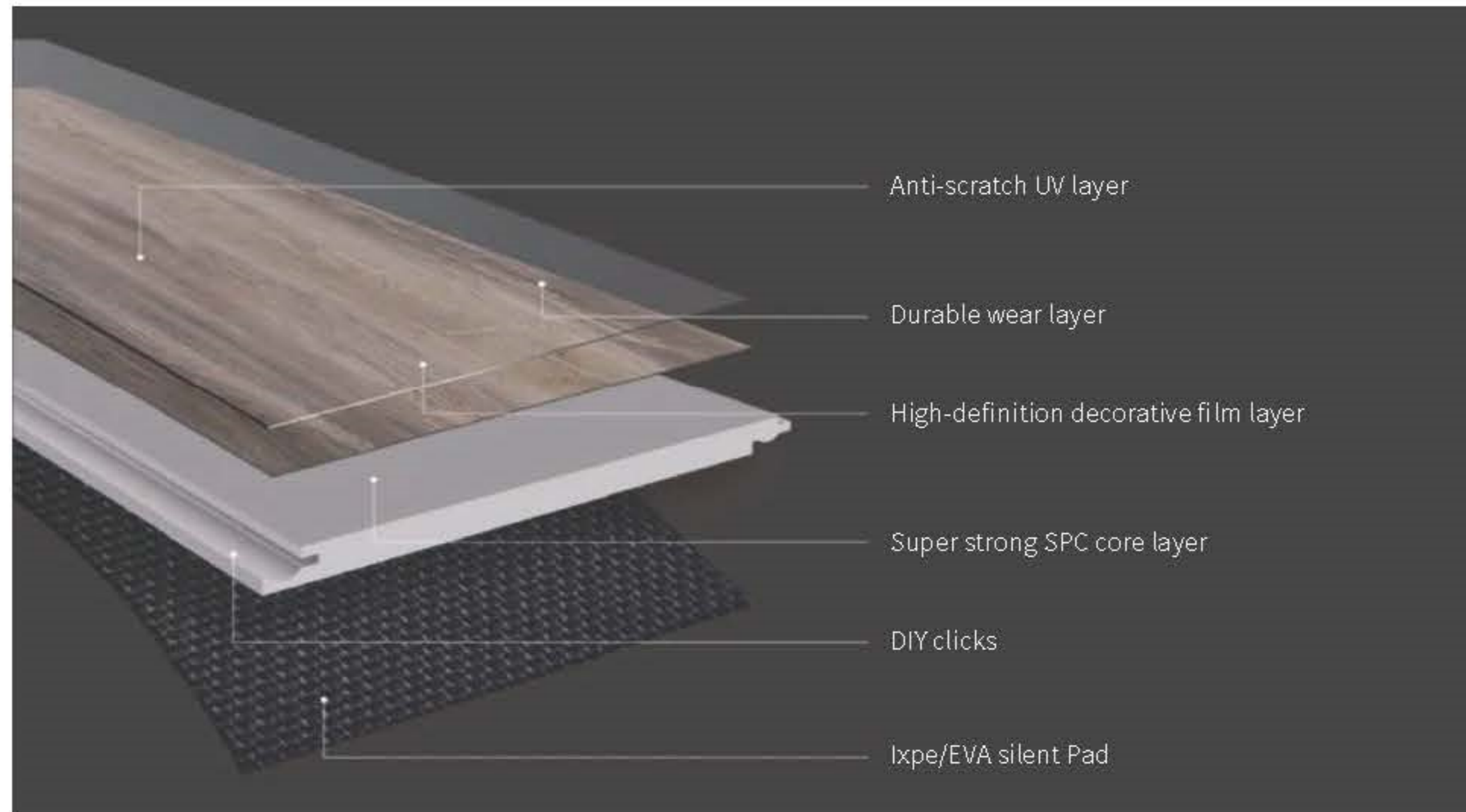




CARSEM
New Materials

SPC Floor(Rigid Core)

SPC is stone and pvc composite.



100% Waterproof



Dimension of the flooring

Length	630mm	750mm	1220mm	1524mm	1830mm	2250mm
	24.8"	26.53"	48.4"	60"	72"	88"
Width	126mm	152mm	183mm	193mm	229mm	310mm
	4.96"	5.98"	7.20"	7.6"	9"	12.2"
Thickness	3.5mm	4mm	4.5mm	5mm	5.5mm	6mm
	6.5mm	7mm	7.5mm	8mm		
Overlay thickness	0.2mm	0.3mm	0.5mm	0.55mm	0.6mm	
	8mil	12mil	20mil	22mil	24mil	
Additional Pad thickness	1mm	1.5mm	2mm			

SPC flooring has the following advantages:

- No heavy metals and chemical substances, earth-friendly.
- Perfect fit for wet areas, won't get moldy .
- Super stability, no deformation after installation.
- No formaldehyde and anti-slip, no harm to health and kid care.
- Fire-proof and termite-proof., free from worry.



CARSEM
New Materials



The Atlantic

Available in 2 different formats, no repetition in 6m², going beyond the standard flooring frame. European oak decors, following the textures and colors of the natural wood, reflecting the fine and rich grains. The floors have a true-to-nature touch and this embossing process highlights the natural wood grains and knots with variations.

Specifications

Construction	SPC-HYBRID
Applicable place	Indoor
Gloss	Ultramatt
Length	1524mm/ 1820mm
Width	183mm / 229mm
Thickness	5mm/6mm/7mm/8mm /9mm
Installation method	Floating

Technical detail

Surface	EIR
Format	3 different formats
Class	23/31/32
Air Quality	E0
Egdes	Micro soft bevel / painted v-groove
Click	2G/5G
Domestic Warranty	25 years
Commercial Warranty	5 years
Floor heating or cooling	Compatible with heating/cooling



88208-1



88208-3



88208-4



88208-7

The Atlantic





CARSEM
New Materials

The Caribbean

Espresso carpenter oak decors, 1890mm long pattern design, effectively reduce the repetition. Following the textures and colors of the natural wood, reflecting the fine and rich grains. The floors have a true-to-nature touch and this embossing process highlights the natural wood grains and knots with variations.

Specifications

Construction	SPC-HYBRID
Applicable place	Indoor
Gloss	Ultramatt
Length	1524/ 1820mm
Width	183mm/229mm
Thickness	5mm/6mm/7mm/8mm/9mm
Installation method	Floating

Technical detail

Surface	EIR
Class	23/31/32
Air Quality	E0
Edges	Micro soft bevel / painted v-groove
Click	2G/5G
Domestic Warranty	25 years
Commercial Warranty	5 years
Floor heating or cooling	Compatible with heating/cooling



50052-10



50052-11



50052-8



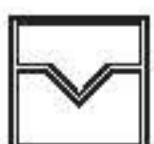
50052-12



50052-14



25 years warranty



V-grooves



Soft-bevel



Warm underfoot



Anti-slip class



E0
HCHO
Clean air quality



The digital printed

Up to 15m2 no petition, the decors in the collections consist of 40 different panels design and authentic appearance of wood and stones thanks to digital print technology.

Specifications

Construction	SPC-HYBRID
Applicable place	Indoor
Gloss	Ultramatt
Length	1820mm/ 2200mm
Width	230mm
Thickness	5mm/6mm/7mm/8mm /9mm
Installation method	Floating

Technical detail

Surface	BP/Brushed line/ Wood texture
Format	3 different formats
Class	23/31/32
Air Quality	E0
Egdes	Micro soft bevel / painted v-groove
Click	2G/5G
Domestic Warranty	25 years
Commercial Warranty	5 years
Floor heating or cooling	Compatible with heating/cooling



CARSEM
New Materials



1009-1



1009-2



1009-3



2006-1



2007-1



2022-1

The Herringbone

Amazing special structures, full of wood character with a wonderful realistic look and feel. Besides, the floors also can be in square frame.

Specifications

Construction	SPC-HYBRID
Applicable place	Indoor
Gloss	Ultramatt
Length	630mm / 750mm
Width	126mm / 150mm
Thickness	4mm/5mm/6mm/7mm/8mm/9mm
Installation method	Floating

Technical detail

Surface	EIR
Class	23/31/32
Air Quality	E0
Egdes	Micro soft bevel / painted v-groove
Click	2G/5G
Domestic Warranty	25 years
Commercial Warranty	5 years
Floor heating or cooling	Compatible with heating/cooling



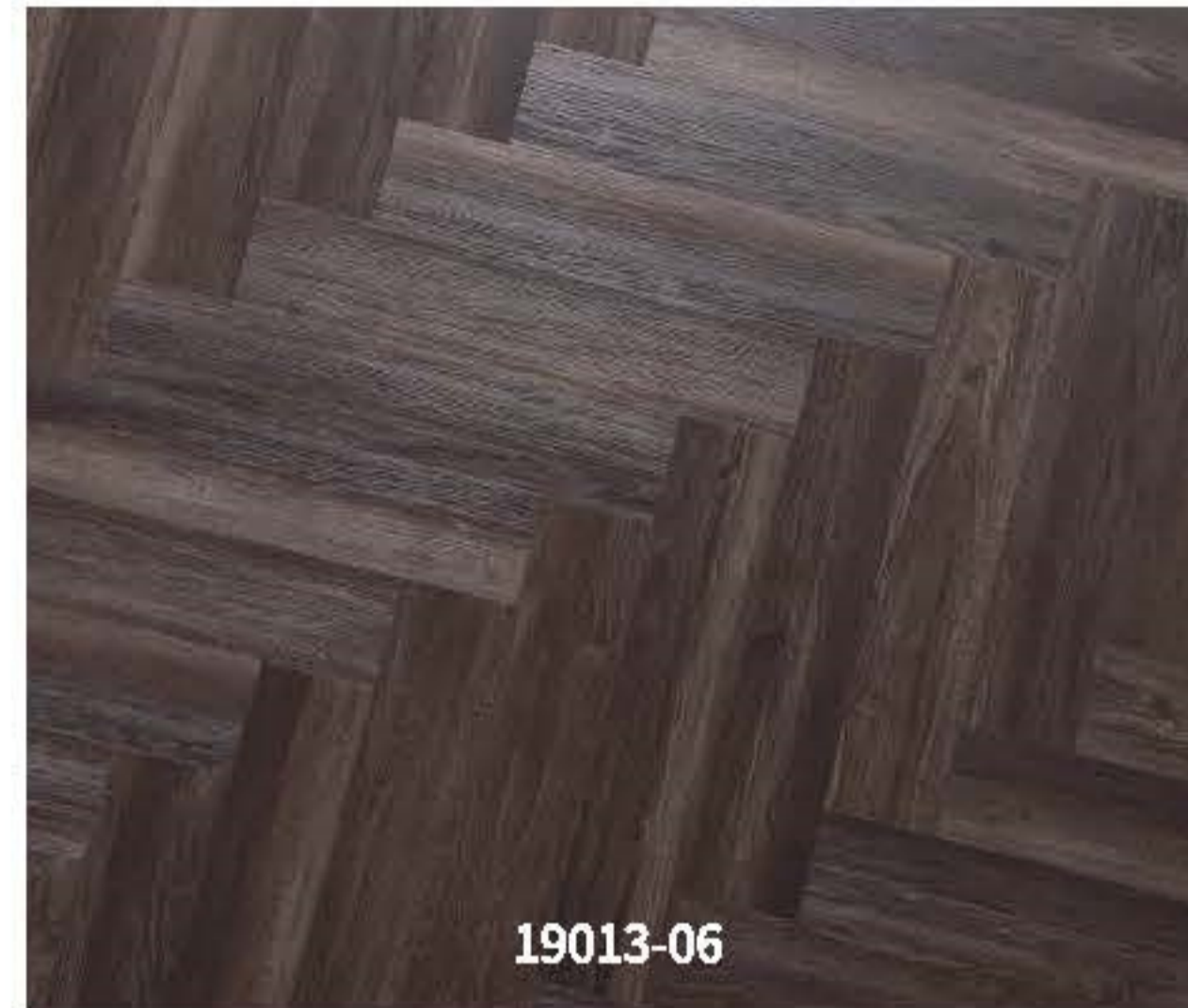
6616



19096-4



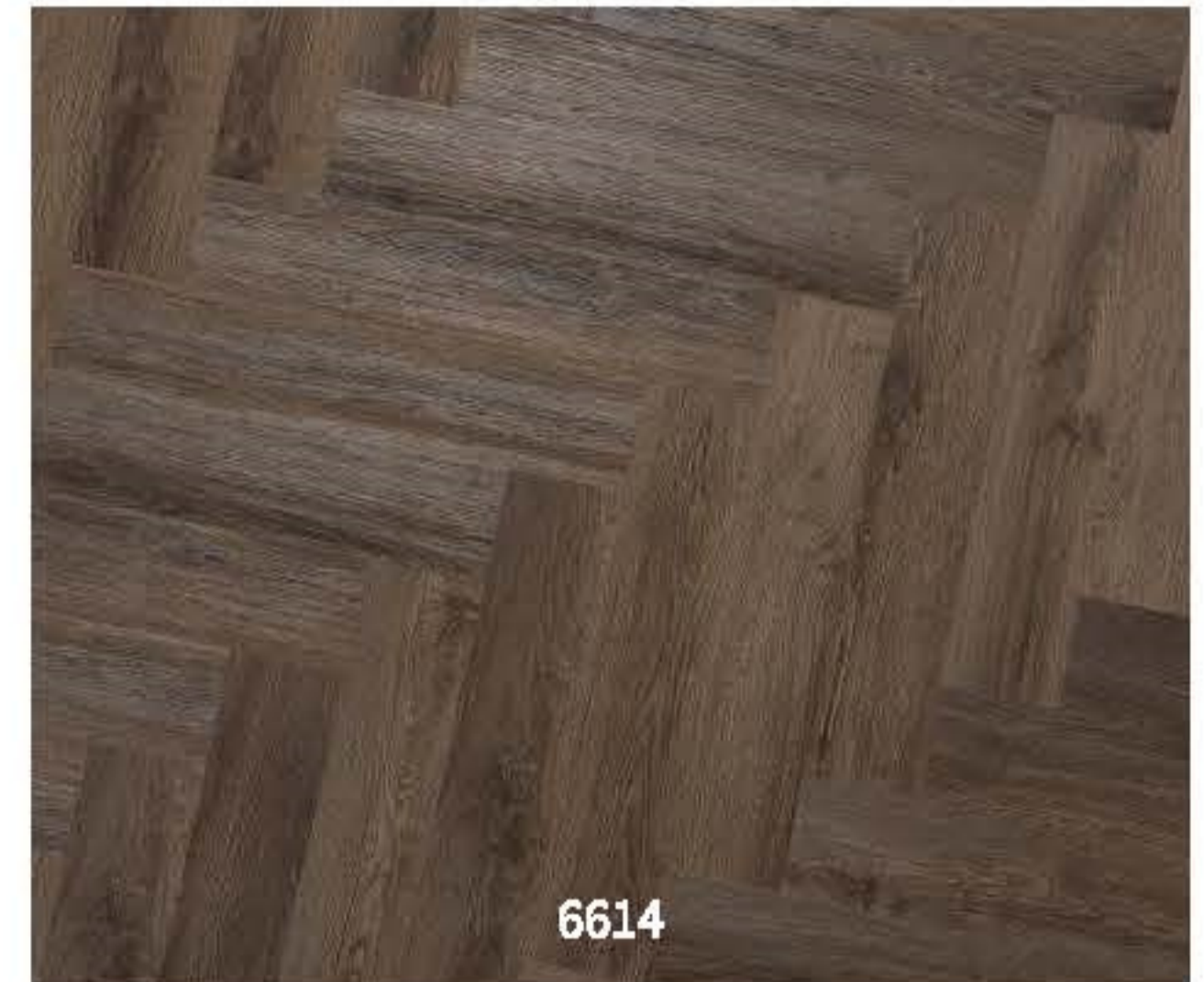
6608



19013-06



85007-6



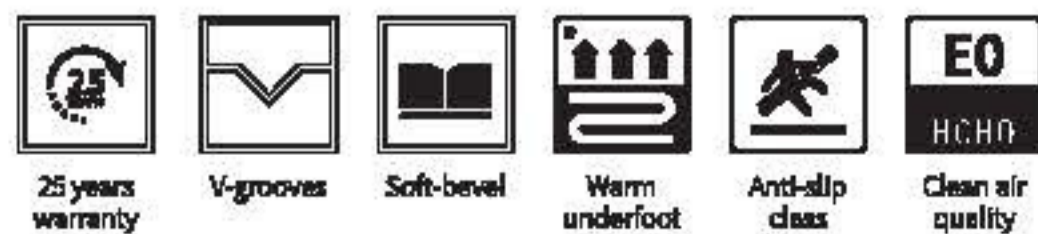
6614



20001



98002-7



CARSEM
New Materials

The Slate

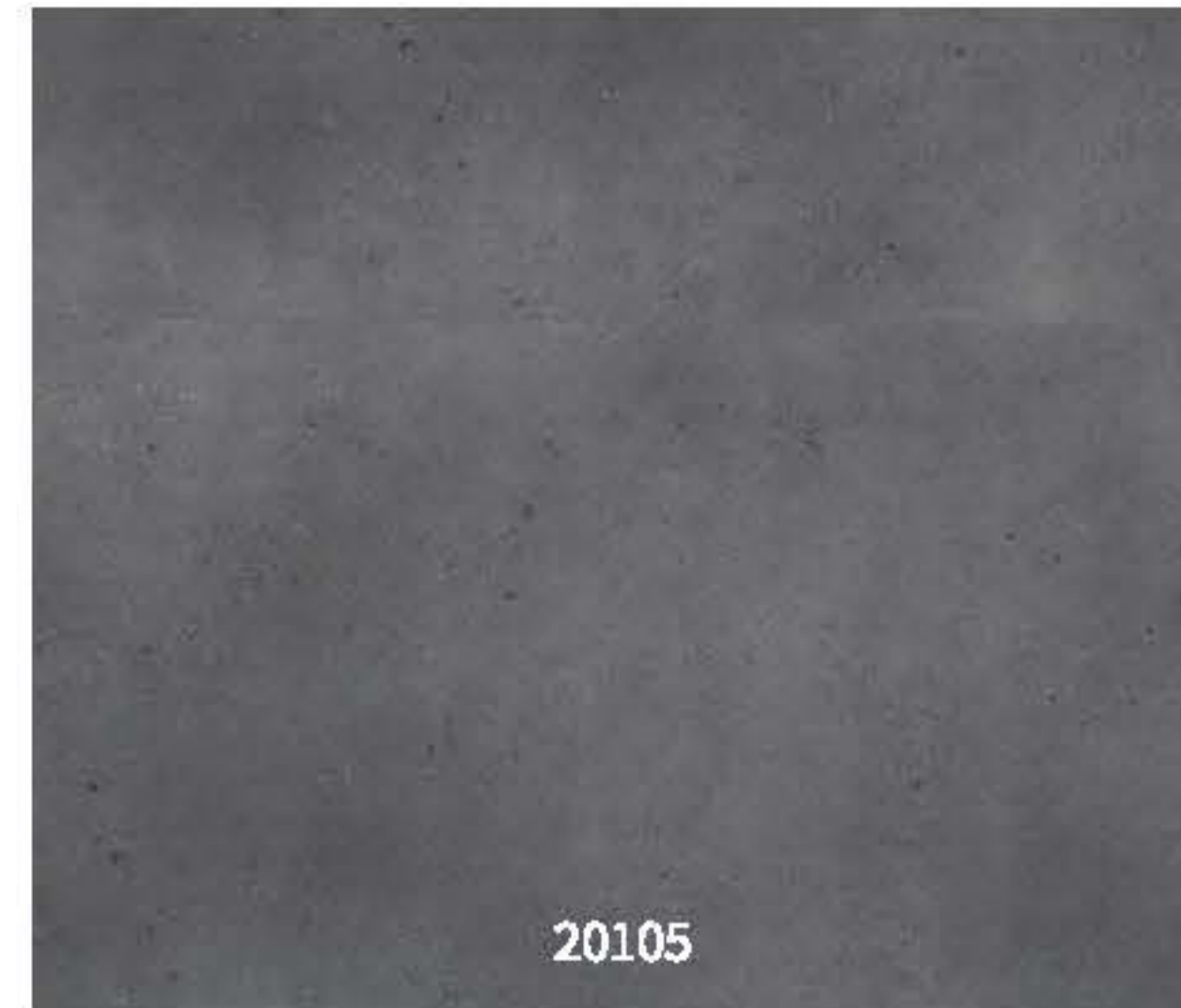
The designs are digital printed, reflecting the finest grains and roughness of stones and concrete. The floors have a true-to-nature touch, reproduction of the real stones.

Specifications

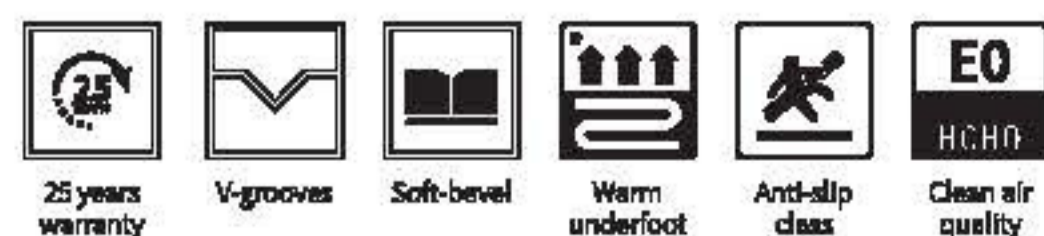
Construction	SPC-HYBRID
Applicable place	Indoor
Gloss	Ultramatt
Length	650mm/ 1220mm
Width	315mm / 460mm
Thickness	4mm/5mm/6mm/7mm/8mm
Installation method	Floating

Technical detail

Surface	Natural line/ Coral
Class	23/31/32
Air Quality	E0
Egdes	Micro soft bevel / painted v-groove
Click	2G/5G
Domestic Warranty	25 years
Commercial Warranty	5 years
Floor heating or cooling	Compatible with heating/cooling



CARSEM
New Materials





CARSEM
New Materials

SPC wall panel

As a new-generation wall panel, it is resistant to stains, mould and anti-scratch. What is more, it is very easy to install them, fast, simple and cost-effective. Perfect suitable for all indoor areas such as dining-room and living room and toilet, thereby it is a prior panel for domestic and commercial use, both in new projects and renovations.

Specifications

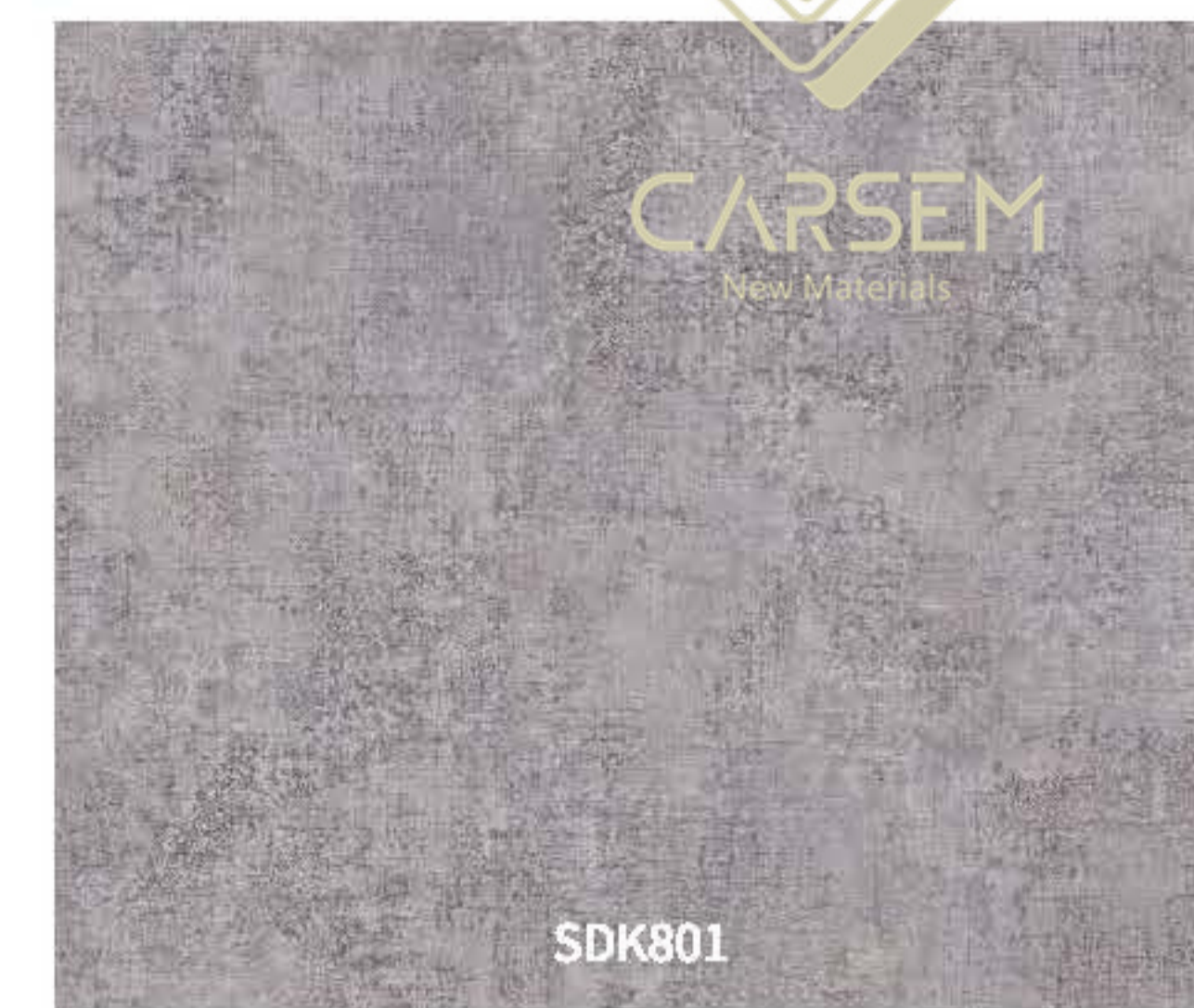
Construction	SPC-HYBRID
Applicable place	Indoor
Gloss	Ultramatt
Length	2800mm(or Customized sizes)
Width	600mm/1200mm
Thickness	3.5mm/4mm
Installation method	Glue/frame

Technical detail

Surface	Natural line / Silk /Linen
Class	21/22/23
Air Quality	E0
Edges	Micro soft bevel / painted v-groove
Click	Flat
Domestic Warranty	25 years
Commercial Warranty	5 years
Floor heating or cooling	Compatible with heating/cooling



SDK2010-1



SDK801



SDK805



Green



SDK20117



SDK20091



Blue

Accessories



Stair Nose:2400×115×25mm



L Profile:2400×40×30mm



SPC Overlap Stair Nose:2400×55×18mm



Stair Nose:2400×110×45mm



SPC Reducer:2400×44x7mm



SPC Stair flush:the floor folded



Scotia:2400×28×15mm



SPC Skirting:2400×70×18mm



Skirting:2400×80x12mm

Technical Information



Physical Data

Test Item	Test Standard	Result
Peel Resistance	EN ISO 24345	0.3mm overlay: \cong 80N 0.5mm overlay: \cong 120N
Curling (80°C, 6 hrs)	EN ISO 23999	\cong 1%
Dimensional Stability	EN ISO 23999	\cong 0.03%
Locking strength	EN ISO 23999	150N
Residual Indentation	EN ISO 24343	\cong 0.05mm
Castor chair	EN 425	0.3mm overlay: \cong 2500 0.5mm overlay: \cong 4000
Reaction to Fire	EN 13501-1 Class Bfl-s1	Critical heat Flux: \cong 8.7kW/m ² Smoke value (% x min) \cong 349
Slip resistance	EN 13893	Class DS (R10)
Formaldehyde Emission	EN 717-1	ND
SVHCs-201 items	EU REACH 1907	ND
16 Phthalates	EN 14372	ND
VOCs-10 individual VOC+TVOC	ISO 16000+French A	ND
Anti-bacteria	ISO 22196	Conformity
Anti-fungi	ISO 846	Conformity
Resistance to Staining	EN 438	Conformity

Specification

Length	EN 427	\pm 0.1mm
Width	EN 427	\pm 0.1mm
Thickness	EN 428	\pm 0.05mm
Squareness	EN 427	\cong 0.10mm
straightness	EN 427	\cong 0.10mm
Gap	EN 427	\cong 0.05mm
High Difference	EN 427	\cong 0.05mm

Appearance

Blisters	GB4085-83	Not Allowed
Cracks	GB4085-83	Not Allowed
Scratchws	GB4085-83	Not Allowed
Dents	GB4085-83	Not Allowed
Wrinkles	GB4085-83	Not Allowed
Dirts/spots	GB4085-83	Not Allowed
Delamination	GB4085-83	Not Allowed